



Association of Administrators in Academic Pediatrics

# GOT GLOBAL HEALTH?

AAAP 34<sup>th</sup> Annual Meeting  
Atlanta, Georgia  
21 May 2017; 13:00-14:45pm

# OBJECTIVES:

At the conclusion of this panel discussion on Global Health, participants will be able to:

1. Describe the roles and responsibilities of the pediatric department chair, community pediatrician and faculty member, daily business and administrative activities, and fellowship coordinator of a Global Health programs in an academic medical center.
2. Articulate the challenges and accomplishments related to the establishment and maintenance of Global Health programs in pediatric departments.
3. Apply a strategy described in the session to their role in their pediatric department to establish or further a Global Health program.



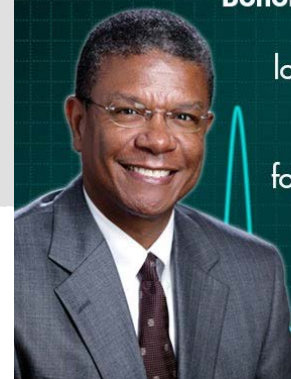
Association of Administrators in Academic Pediatrics

# INTRODUCTION

# PEDIATRICS®

OFFICIAL JOURNAL OF THE AMERICAN ACADEMY OF PEDIATRICS

THE AMERICAN BOARD *of* PEDIATRICS | **BLOG**



**Bottom Line:** A host of medical problems--not just Ebola--has made it clear that there is no longer a plausible separation between global health and health in the United States. This month's blog explores the implications for training, knowledge, and professionalism.

**Supporting Global Health at the Pediatric Department Level: Why and How**  
Michael B. Pitt, Melissa A. Moore, Chandy C. John, Maneesh Batra, Sabrina M. Butteris, Gladstone E. Airewele, Parmi S. Suchdev, Mark C. Steinhoff and on behalf of the American Board of Pediatrics Global Health Task Force  
*Pediatrics*; originally published online May 3, 2017;  
DOI: 10.1542/peds.2016-3939



GLOBAL HEALTH

# WHY SUPPORT GH

## 1. Educational demand

- 33% medical students and 20% pediatric residents have a GH experience during training; 22% state that GH opportunities impact choice of program
- Recommended core competencies – faculty GH leads (66%)

## 2. Response to need

- Ebola, Zika, refugees, international adoptees, travelers, human trafficking, genital mutilation

## 3. Training of the global pediatric workforce

## 4. Support of research

- Role of infection in cancers and oral rehydration solution

# HOW TO SUPPORT GH

Supporting Global Health at the Pediatric Department Level: Why and How  
Michael B. Pitt, Melissa A. Moore, Chandy C. John, Manesh Batra, Sabrina M. Butters, Gladstone E. Airewele, Pami S. Suchdev, Mark C. Steinhoff and on behalf of the American Board of Pediatrics Global Health Task Force  
*Pediatrics*, originally published online May 3, 2017;  
DOI: 10.1542/peds.2016-3939

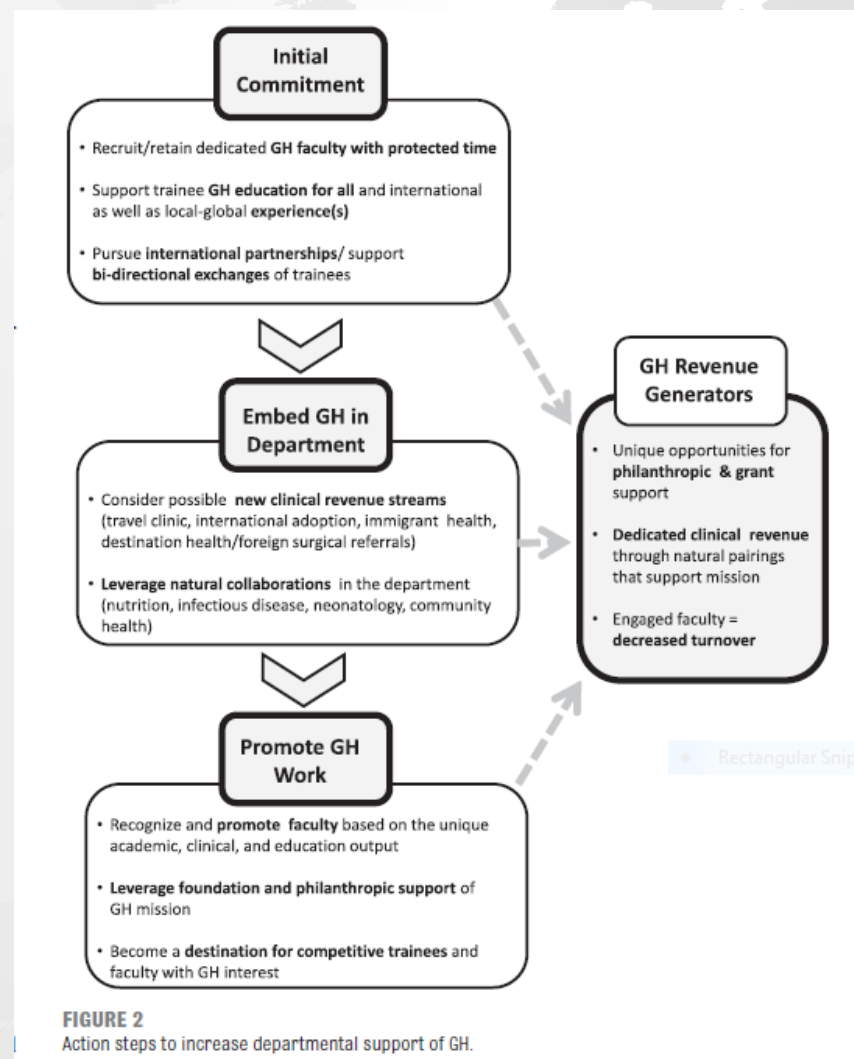


FIGURE 2

Action steps to increase departmental support of GH.



# PANEL:

## Moderator

**Andi L. Shane, MD, MPH, MSc**, Associate Professor, Interim Clinical Division Chief of Infectious Diseases, and Marcus Professor of Hospital Epidemiology and Infection Control, Emory University School of Medicine, Rollins School of Public Health, and Children's Healthcare of Atlanta

## Panelists

**Joe St. Geme, MD**, Physician-in-chief and Chairman of the Department of Pediatrics, The Children's Hospital of Philadelphia

**Flavia Mercado, MD**, Medical Director, Adjunct Assistant Professor, Inovalon, Department of Pediatrics, Emory University School of Medicine, Atlanta, GA

**Valerie Cole**, Fellowship & Global Health Track Coordinator in Pediatrics, University of Minnesota

**Chris Tobias**, Director of Administration, Finance and Operations for the Duke Global Health Institute, Duke University





# PANEL FORMAT:

## First round:

Introduction, Journey, Role

## Second round:

Greatest accomplishment and greatest challenge related to Global Health Administration

## Questions from the Audience:

## Panel Questions:

1. What is the rationale (and advantages) for a global health program in a department of pediatrics?
2. What are some examples of local global health?
3. Are global health programs relevant only for residents or for other groups as well?
4. What are the toughest challenges for faculty and staff in working overseas?
5. How are international partners different and alike in relation to their domestic counterparts?