

THE ROLE OF HEALTH CARE INSTITUTIONS IN PROMOTING CHILDREN'S HEALTHY DEVELOPMENT

The Connecticut Experience

Paul H. Dworkin, MD

“Becoming a Critical Community Resource”

2015 Northeast/South Regional AAP Conference

October 11, 2015



Connecticut Children's
Office for Community Child Health





Connecticut Children's Medical Center



 **Help Me Grow[®]**
National Center

Connecticut Children's
Office for Community Child Health



HARTFORD
★
HAS IT

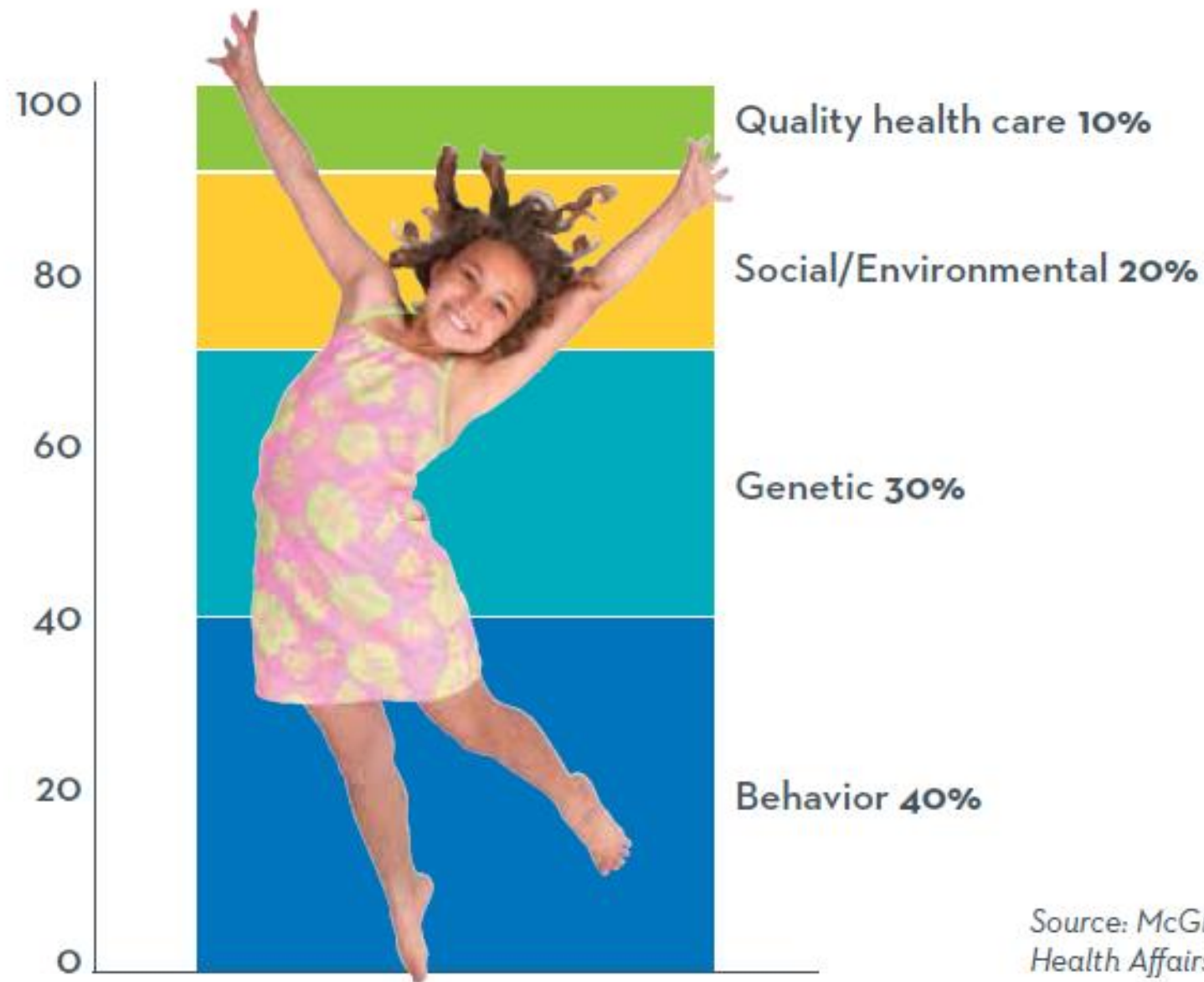


Hartford, Connecticut

Poor Quality Housing Stock



DETERMINANTS OF HEALTH



Source: McGinnis, J.M. et al.
Health Affairs 2002;21(2):78-93

“

Humans are **not** ideally set up to understand **logic**;
they are ideally set up to understand **stories**.

Roger Schank, cognitive neuroscientist

”

Enhanced Health Outcomes and Systems Improvement in Many Issue Areas

**Asthma
Management**

**Injury
Prevention**

**Care
Coordination**



**Developmental
Promotion**

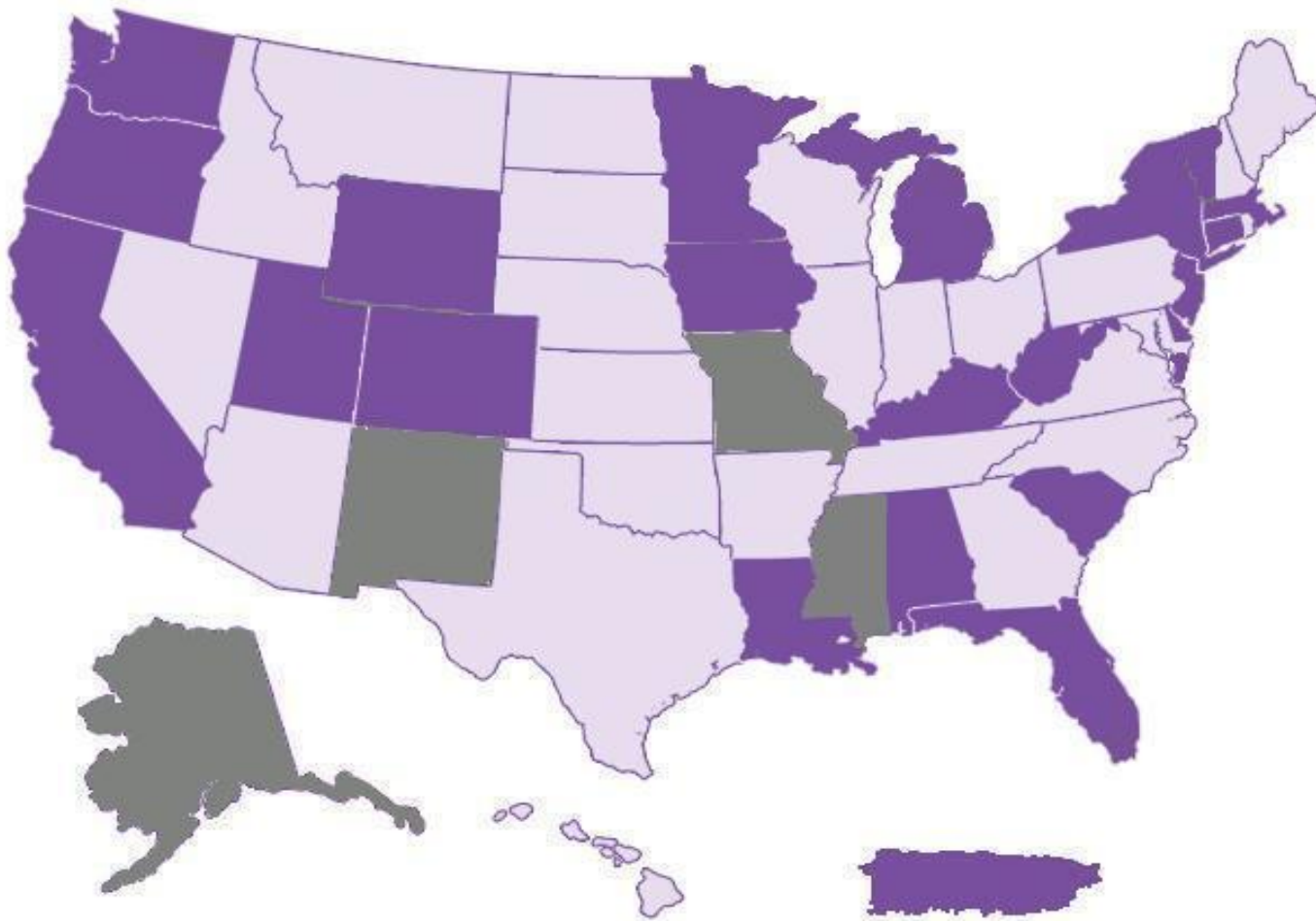
**Environmental
Toxins**

Successful Innovations

CT Children's community programs lead to enhanced children's health outcomes and systems improvement



<i>Help Me Grow</i> pilot	➡	☑ Statewide, nationwide replication
<i>Easy Breathing</i>	➡	☑ Statewide, nationwide replication



The Problem



But...

community programs are not optimally supported

Connecticut Children's Office for Community Child Health (OCCH)

Connecticut Children's
Office for Community Child Health



Connecticut Children's Strategic Plan (2013-2017)

- Connecticut Children's **Vision**
 - We are making the children of Connecticut the healthiest in the country
- Community Child Health as **Strategic Priority**
 - Become a national role model for ensuring children and their families have access to a comprehensive system of services and programs designed to make the children of Connecticut the healthiest in the country

OCCH Programs Cover a Wide Range of Issues

Co-Management
Program

Easy Breathing

Educating
Practices in the
Community
(EPIC)

Hartford
Childhood
Wellness Alliance

Hartford Youth
HIV Identification
and Linkage
(HYHIL) Program

Help Me Grow
(HMG) National
Center

Injury Prevention
Center (IPC)

Connecticut
Children's
Healthy Homes

Practice Quality
Improvement

Mid-Level
Developmental
Assessment

Patient-Centered
Medical Home

Care Coordination
Collaborative
Model

Resident Education
in Advocacy and
Community Health
(REACH)

OCCH Programs Comprise Direct Service and Systems Improvement

Direct Service



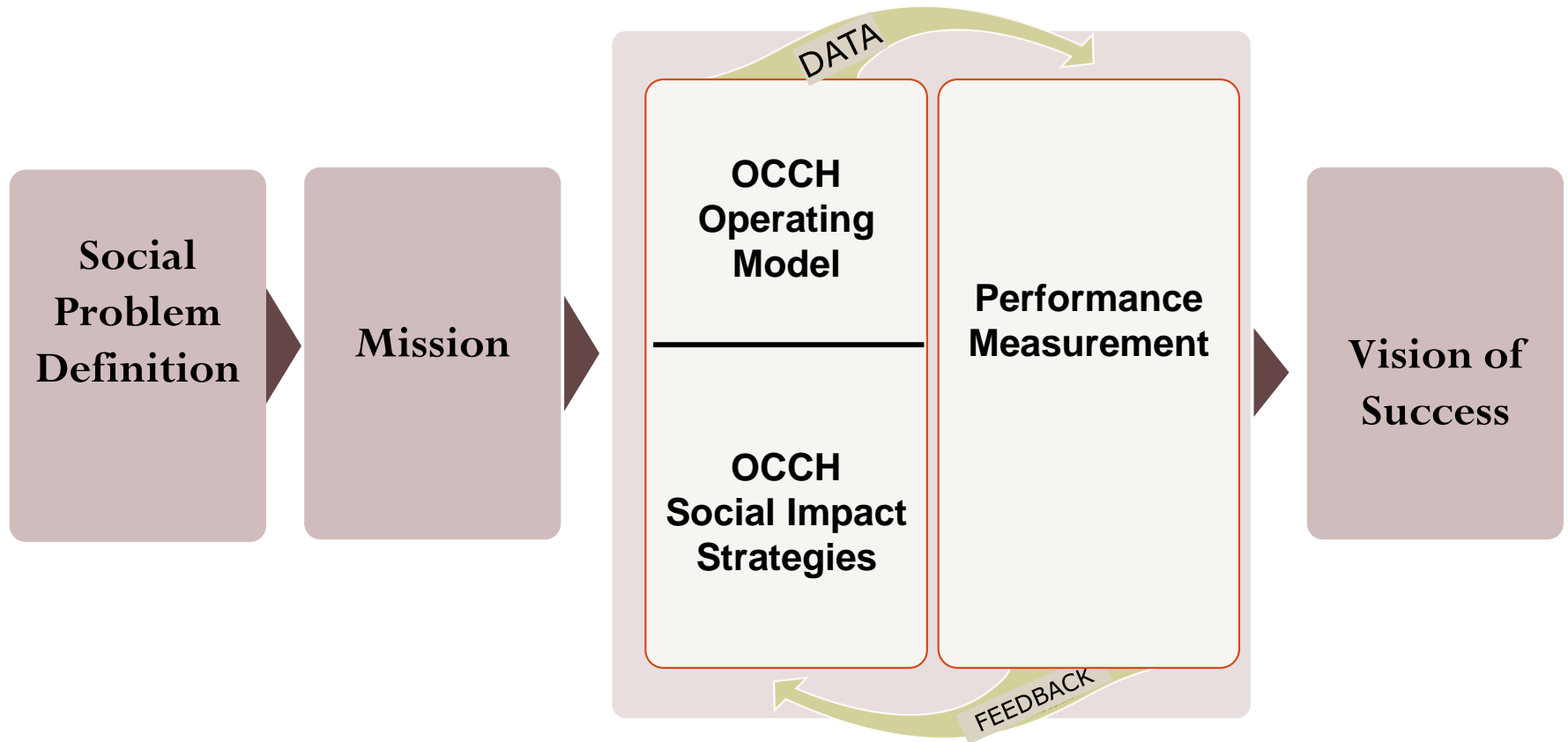
Connecticut Children's
Healthy Homes Program

Systems Improvement



Help Me Grow
National Center

Social Impact Model



Social Problem Definition

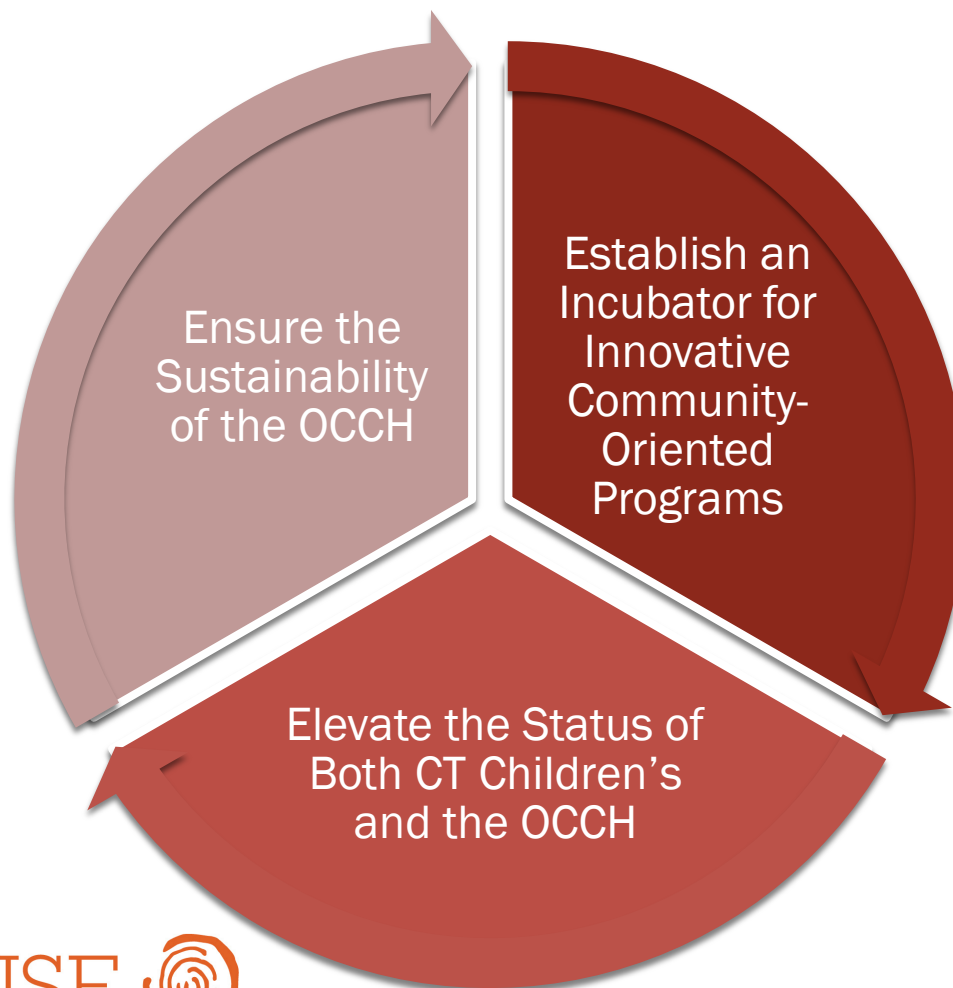
While Connecticut Children's provides high-quality clinical care, research, and education, having the maximum impact on children's health requires that these activities be complemented by a strong set of community programs. CT Children's has not sufficiently leveraged existing and potential resources in a way that optimally supports community-oriented programs, reducing the programs' impact as well as CT Children's status as a critical community resource...

OCCH MISSION

To elevate the effectiveness and status of the medical center as a critical community resource by developing, promoting, supporting, evaluating, and disseminating innovative, effective community-oriented programs and services to address children's critical health needs.

OCCH Strategies

Connecticut Children's
Office for Community Child Health



OCCH Support for Programs

Innovation Incubator



The diagram features a large, light brown rounded rectangle. Inside it, a red triangle points upwards from the bottom left towards the top right. Overlaid on the right side of the triangle are six horizontal white boxes with red borders, each containing a step of the process. The steps are: Sustainability, Communications, Planning, Training and education, Evaluation, and Policy advocacy.

Sustainability

Communications

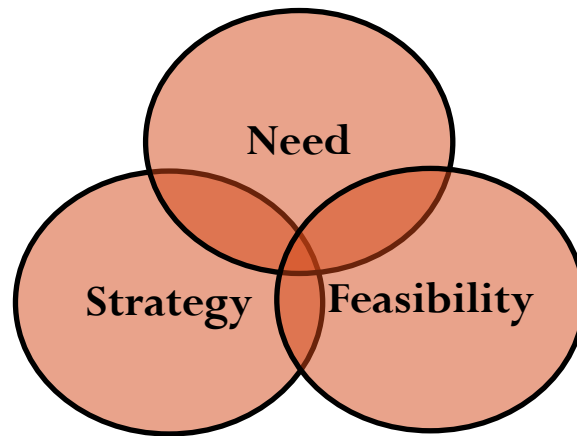
Planning

Training and education

Evaluation

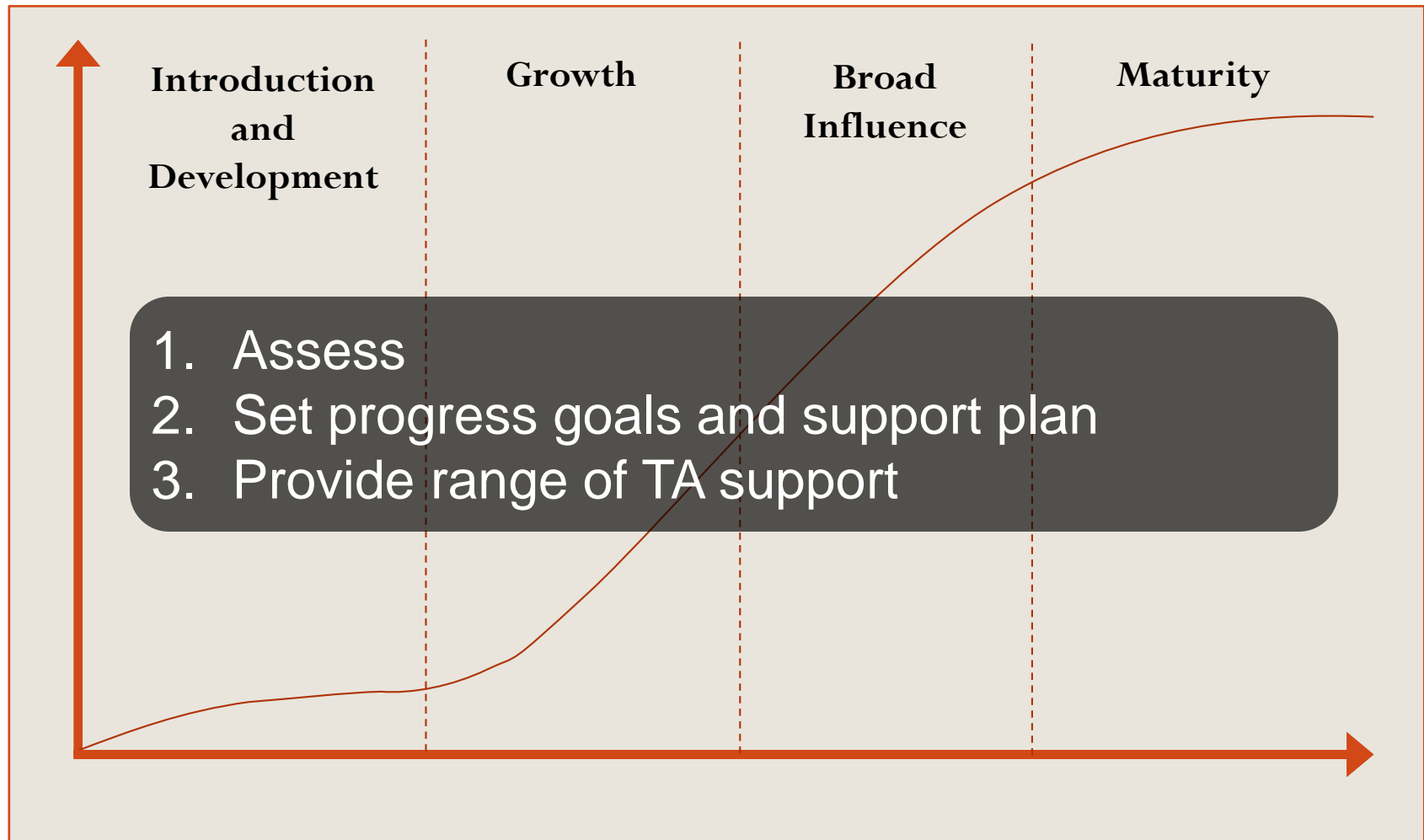
Policy advocacy

OCCH Supports Programs that Fit Criteria



- ☑ **Need:** Relate to significant community needs or needs of the healthcare system
- ☑ **Strategy:** Alignment with and/or advance medical center strategy
- ☑ **Feasibility:** Feasible to implement, as well as leverage existing resources

OCCH Supports the Evolution of Programs



OCCH support leads to not only increased number of children served, but also to programs' development and evolution

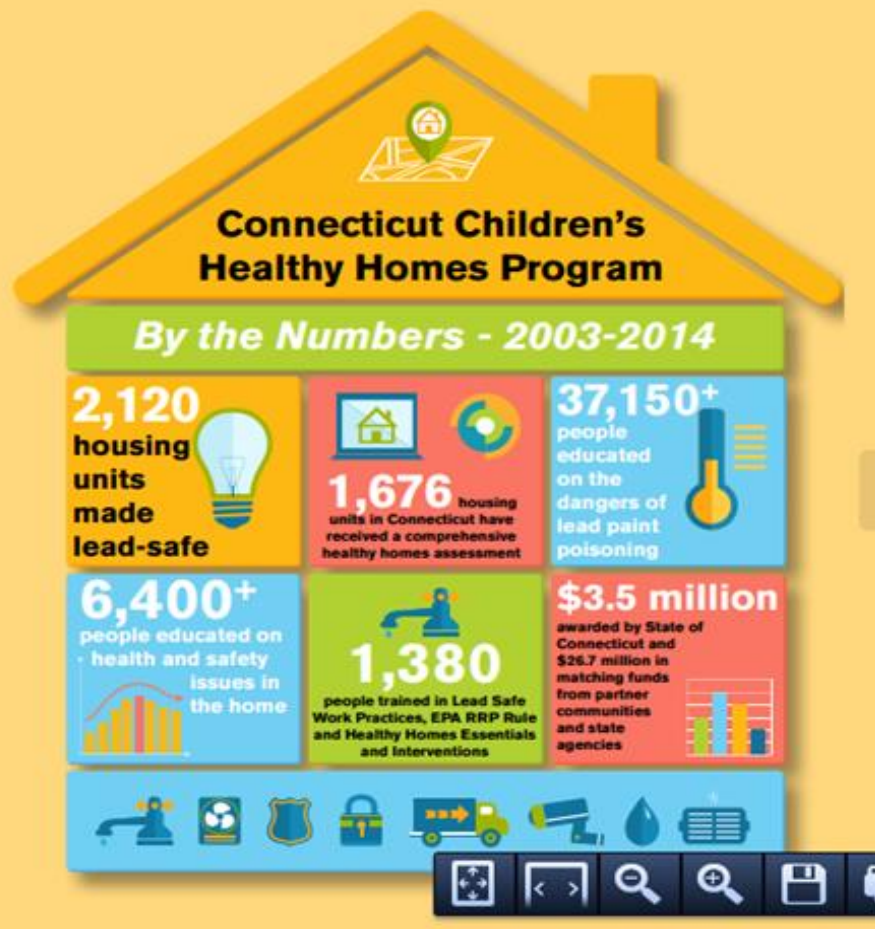
Performance Metrics

Connecticut Children's
Office for Community Child Health



CONNECTICUT CHILDREN'S HEALTHY HOMES PROGRAM

The Connecticut Children's Healthy Homes Program improves children's health by making their homes healthier, safer and more energy efficient. The program addresses critical housing hazards, such as lead, other harmful exposures and asthma triggers.



Performance Metrics

Connecticut Children's
Office for Community Child Health



COMMUNITY CHILD HEALTH

INJURY PREVENTION CENTER

Founded in 1990, the Injury Prevention Center (IPC) engages in research, community outreach, education and training, and public policy work in an effort to reduce preventable injuries and violence to children. The IPC has three primary focus areas for its research: teen driving safety, adolescent suicide prevention, and the prevention of intimate partner violence. Its community programs, including Safe Kids Connecticut and the Injury Free Coalition for Kids of Hartford, address a wide range of child safety concerns, from child passenger safety to poisoning prevention and other home safety issues. The IPC is a crucial partner in Connecticut Children's Level I Trauma Center designation.

*The work of the Injury Prevention Center has contributed to an estimated **20-40% reduction in injuries and fatalities to teen drivers** since 2008. This work is long-term and involves advocacy, education, and legislation.*



HARTFORD YOUTH HIV IDENTIFICATION AND LINKAGE CONSORTIUM

As a collaborative network of community-based agencies, medical providers, youth representatives and others, the Hartford Youth HIV Identification and Linkage Consortium (HYHIL) works to prevent the spread of HIV and sexually transmitted diseases (STDs) among youth through interactive prevention education, community engagement and outreach, and youth-friendly HIV/STD screenings. HYHIL also assures a seamless linkage to community resources, medical care services, and employment services for youth and young adults.

40,000 students and young adults

have received preventive HIV/STD and other risk reduction education through the work of HYHIL since the program was established in 1999.



SPECIAL KIDS SUPPORT CENTER

Special Kids Support Center provides comprehensive and culturally competent care coordination to children with special health care needs and vulnerable children. Care coordinators partner with families, primary care providers and specialists to assure that children and their families receive the medical and social services and resources that are critical for overall health and well-being. Special Kids Support Center supports families by advocating for access to appropriate medical, behavioral, educational, legal, and social services. The Center also provides primary care practices with training, assistance, and support to increase their care coordination capacity to meet the standards to become person-centered medical homes (PCMH).

9,631

children and youth screened.

5,514

children/youth and families in North-Central Connecticut served.

*Figures compiled in June 2014 upon culmination of the four-year Medical Home Initiative Grant through the Connecticut Department of Public Health



Performance Metrics

- Process measures
(Results-Based Accountability)
 - Programs and services
 - Children and families
- Outcomes
 - Child health
 - Child development
 - School readiness
 - Academic outcomes
- Proximate measures / Mediating factors
 - Family resiliency
 - Parental understanding of child's development
- Cost benefit / cost effectiveness
 - “Demedicalization”

FIVE PROTECTIVE FACTORS

- PARENTAL RESILIENCE
- SOCIAL CONNECTIONS
- KNOWLEDGE of PARENTING and CHILD DEVELOPMENT
- CONCRETE SUPPORT in TIMES of NEED
- SOCIAL and EMOTIONAL COMPETENCE of CHILDREN



CENTER FOR THE STUDY
OF SOCIAL POLICY'S

strengthening families
A PROTECTIVE FACTORS TOOLKIT

Investing in the OCCH Yields Strong ROI

Direct Benefits (Healthcare Reform)

Reduce costs (e.g., asthma ED visits and readmissions)

Realign reimbursement incentives (e.g., risk management)

Promote efficiencies (e.g., co-management)

Reduce omissions/gaps (e.g., care coordination collaborative model)

Preserve tax-exempt status (i.e., federal requirements)

Investing in the OCCH Yields Strong ROI

Indirect Benefits

Justify state support

Increase reimbursement rates (public and private)

Increase appeal to foundations and private funders

Fulfill community benefit requirements

Increase stature

*Ensures medical center's effectiveness and status as a critical
community resource*



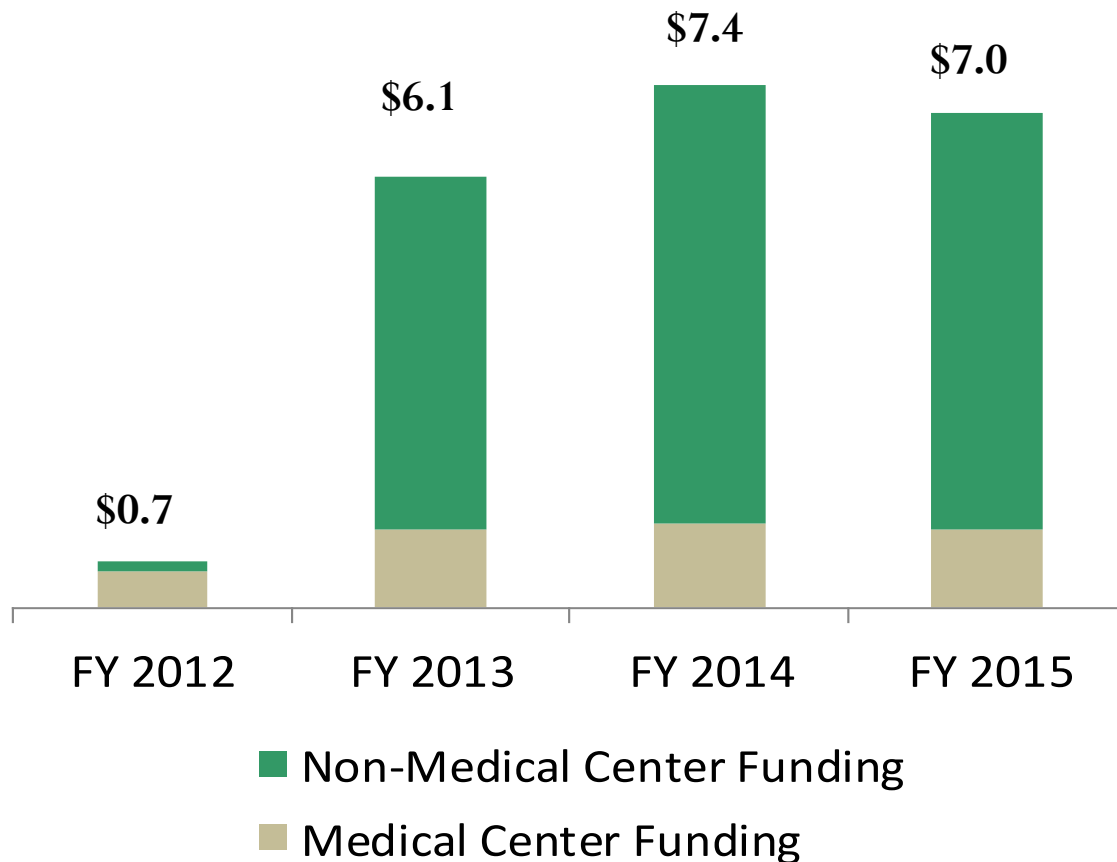
[http://www.connecticutchildrens.org/files/7814/3713/9166/2014_CommunityBenefitReport.pdf]

Connecticut Children's
Office for Community Child Health



Investing for Impact

OCCH Budget, FY 2012-FY 2015, in millions



- Average annual budget to grow to ~\$6.8 M
- Continued support from Medical Center
- Diversify with foundations, corporations, individuals
- Accounts for ~30% of total organizational fundraising

Our Message...

Connecticut Children's can become a leader in innovative community service delivery models, and create broad systemic change – impacting child health – at the regional, state, national, and global levels.





Connecticut Children's
Office for Community Child Health



Appendix I: OCCH Operating Model

CORE ACTIVITIES

Info, Data, and Enhanced Knowledge

Communications

Partner Development & Community Relations

INNOVATION INCUBATOR

ASSESS

Program Fit

Advance Critical Priority?

☐ Yes

☐ No



Endpoint

☐ Broad Influence

☐ Community Impact

SET PROGRESS
GOALS AND
CREATE SUPPORT
PLAN

Intense Support

Intense Support

Limited Support

PROVIDE SUPPORT

INTENSE SUPPORT

LIMITED SUPPORT

Internal Advocacy

Sustainability

Services/TA

External Fundraising

Planning

Training & Education

Evaluation

Supports/Referrals

Policy Advocacy

PERFORMANCE MEASUREMENT

No Fit

No Assessment

LIGHT SUPPORT

General Advice & Guidance

Appendix II: Office for Community Child Health Administrative Reporting Structure

